

Part 2a: Male genitalia of Superfamily: Noctuoidea

Family 71: Notodontidae. Male genitalia - armature

Subfamily: Thaumetopoeinae



001 *Thaumetopoeia processionea* (Oak Processionary)

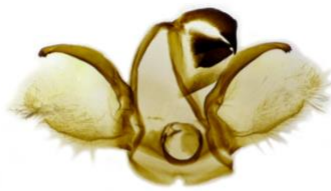
Subfamily: Cerurinae



003 *Cerura vinula* (Puss Moth)



005 *Furcula furcula* (Sallow Kitten)

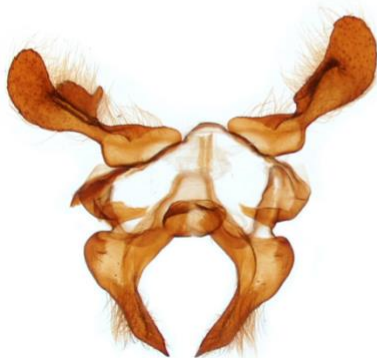


006 *Furcula bicuspis* (Alder Kitten)



007 *Furcula bifida* (Poplar Kitten)

Subfamily: Dicranurinae



009 *Stauropus fagi* (Lobster Moth)

Subfamily: Notodontinae



010 *Drymonia dodonaea* (Marbled Brown)



011 *Drymonia ruficornis* (Lunar Marbled Brown)



012 *Notodonta dromedarius* (Iron Prominent)



013 *Notodonta zcizac* (Pebble Prominent)



016 *Peridea anceps* (Great Prominent)



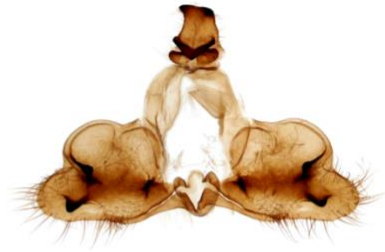
017 *Pheosia tremula* (Swallow Prominent)



018 *Pheosia gnoma* (Lesser Swallow Prominent)



020 *Pterostoma palpina* (Pale Prominent)



021 *Ptilodon capucina* (Coxcomb Prominent)



022 *Ptilodon cucullina* (Maple Prominent)



023 *Odontosia carmelita* (Scarce Prominent)



024 *Ptilophera plumigera* (Plumed Prominent)

Subfamily: Phalerinae



025 *Phalera bucephala* (Buff-tip)

Subfamily: Pygaerinae



027 *Clostera curtula* (Chocolate-tip)



028 *Clostera pigra* (Small Chocolate-tip)

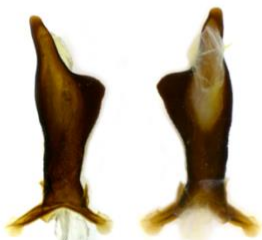
Family 71: Notodontidae. Male genitalia – aedeagus

Subfamily: Thaumetopoeinae



001 *Thaumetopoea processionea* (Oak Processionary)

Subfamily: Cerurinae



003 *Cerura vinula* (Puss Moth)



005 *Furcula furcula* (Sallow Kitten)



006 *Furcula bicuspis* (Alder Kitten)



007 *Furcula bifida* (Poplar Kitten)

Subfamily: Dicranurinae



009 *Stauropus fagi* (Lobster Moth)

Subfamily: Notodontinae



010 *Drymonia dodonaea* (Marbled Brown)



011 *Drymonia ruficornis* (Lunar Marbled Brown)



012 *Notodonta dromedarius* (Iron Prominent)



013 *Notodonta zczizac* (Pebble Prominent)



016 *Peridea anceps* (Great Prominent)



017 *Pheosia tremula* (Swallow Prominent)



018 *Pheosia gnoma* (Lesser Swallow Prominent)



020 *Pterostoma palpina* (Pale Prominent)



021 *Ptilodon capucina* (Coxcomb Prominent)



022 *Ptilodon cucullina* (Maple Prominent)



023 *Odontosia carmelita* (Scarce Prominent)



024 *Ptilophera plumigera* (Plumed Prominent)

Subfamily: Phaerinae



025 *Phalera bucephala* (Buff-tip)

Subfamily: Pygaerinae



027 *Clostera curtula* (Chocolate-tip)



028 *Clostera pigra* (Small Chocolate-tip)