

Part 2a: Male genitalia of Superfamily: Noctuoidea

Family 72: Erebidae. Male genitalia - armature

Subfamily: Scoliopteryginae



001 *Scoliopteryx libatrix* (Herald)

Subfamily: Rivulinae



002 *Rivula sericealis* (Straw Dot)

Subfamily: Hypeninae



003 *Hypena proboscidalis* (Snout)



004 *Hypena rostralis* (Buttoned Snout)



007 *Hypena crassalis* (Beautiful Snout)

Subfamily: Lymantriinae

Tribe: Leucomini



009 *Leucoma salicis* (White Satin Moth)

Tribe: Lymantriini



010 *Lymantria monacha* (Black Arches)

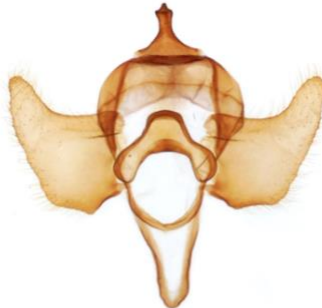


011 *Lymantria dispar* (Gypsy Moth)

Tribe: Nygmiini



012 *Euproctis chrysorrhoea* (Brown-tail)



013 *Euproctis similis* (Yellow-tail)

Tribe: Orgyiini



015 *Calliteara pudibunda* (Pale Tussock)



016 *Dicallopera fascellina* (Dark Tussock)



017 *Orgyia antiqua* (Vapourer)

Subfamily: Arctiinae

Tribe: Arctiini



019 *Spilosoma lutea* (Buff Ermine)



020 *Spilosoma lubricipeda* (White Ermine)



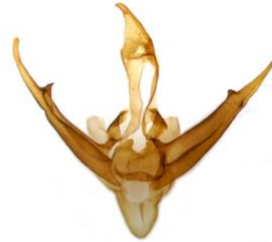
021 *Spilosoma urticae* (Water Ermine)



022 *Diaphora mendica* (Muslin Moth)



023 *Diacrisia sannio* (Clouded Buff)



024 *Phragmatobia fuliginosa* (Ruby Tiger)



025 *Parasemia plantaginis* (Wood Tiger)



026 *Arctia caja* (Garden Tiger)



027 *Arctia villica* (Cream-spot Tiger)



029 *Callimorpha dominula* (Scarlet Tiger)



030 *Euplagia quadripunctaria* (Jersey Tiger)



031 *Tyria jacobaea* (Cinnabar)



032 *Coscinia cribraria* (Speckled Footman)



034 *Utetheisa pulchella* (Crimson Speckled)

Tribe: Lithosiini



035 *Miltochrista miniata* (Rosy Footman)



036 *Nudaria mundana* (Muslin Footman)



037 *Thumatha senex* (Round-winged Muslin)



038 *Cybosia mesomella* (Four-dotted Footman)



039 *Pelosia muscerda* (Dotted Footman)



040 *Pelosia obtusa* (Small Dotted Footman)



041 *Lithosia quadra* (Four-spotted Footman)



042 *Atolmis rubricollis* (Red-necked Footman)



043 *Eilema depressa* (Buff Footman)



044 *Eilema griseola* (Dingy Footman)



045 *Eilema lurideola* (Common Footman)



046 *Eilema complana* (Scarce Footman)



047 *Eilema caniola* (Hoary Footman)



048 *Eilema pygmaeola* (Pigmy Footman)



049 *Eilema sororcula* (Orange Footman)



050 *Setina irrorella* (Dew Moth)

Subfamily: Herminiinae



052 *Macrochilo cribrumalis* (Dotted Fan-foot)



053 *Herminia tarsipennalis* (Fan-foot)



054 *Herminia tarsicrinalis* (Shaded Fan-foot)



055 *Herminia grisealis* (Small Fan-foot)



057 *Pechipogo plumigeralis* (Plumed Fan-foot)

Subfamily: Hypenodinae



060 *Hyphenodes humidalis* (Marsh Oblique-barred)



061 *Schrankia costaestrigalis* (Pinion-streaked Snout)



062 *Schrankia taenialis* (White-lined Snout)

Subfamily: Erebinae

Tribe: Catocalini



076 *Catocala fraxini* (Clifden Nonpareil)



078 *Catocala nupta* (Red Underwing)



079 *Catocala electa* (Rosy Underwing)



082 *Catocala promissa* (Light Crimson Underwing)

Tribe: Euclidiini



083 *Euclidia glyphica* (Burnet Companion)



084 *Callistege mi* (Mother Shipton)

Subfamily: Toxocampinae



063 *Lygephila pastinum* (Blackneck)

Subfamily: Boletobiinae



066 *Parascotia fuliginaria* (Waved Black)



067 *Phytometra viridaria* (Small Purple-barred)



069 *Laspeyria flexula* (Beautiful Hook-tip)



070 *Tristaeles emortualis* (Olive Crescent)



072 *Eublemma ostrina* (Purple Marbled)



073 *Eublemma parva* (Small Marbled)

Family 72: Erebidae. Male genitalia – aedeagus

Subfamily: Scoliopteryginae



001 *Scoliopteryx libatrix*
(Herald)

Subfamily: Rivulinae



002 *Rivula sericealis*
(Straw Dot)

Subfamily: Hypeninae



003 *Hypena proboscidalis*
(Snout)



004 *Hypena rostralis*
(Buttoned Snout)



007 *Hypena crassalis*
(Beautiful Snout)

Subfamily: Lymantriinae

Tribe: Leucomini



009 *Leucoma salicis* (White
Satin Moth)

Tribe: Lymantriini



010 *Lymantria monacha*
(Black Arches)

Tribe: Nygmiini



011 *Lymantria dispar* (Gypsy Moth)



012 *Euproctis chrysorrhoea*
(Brown-tail)



013 *Euproctis similis* (Yellow-tail)

Tribe: Orgyiini



015 *Calliteara pudibunda* (Pale Tussock)



016 *Dicallomera fascellina* (Dark
Tussock)



017 *Orgyia antiqua* (Vapourer)

Subfamily: Arctiinae

Tribe: Arctiini



019 *Spilosoma lutea* (Buff Ermine)



020 *Spilosoma lubricipeda* (White Ermine)



021 *Spilosoma urticae* (Water Ermine)



022 *Diaphora mendica* (Muslin Moth)



023 *Diacrisia sannio* (Clouded Buff)



024 *Phragmatobia fuliginosa* (Ruby Tiger)



025 *Parasemia plantaginis* (Wood Tiger)



026 *Arctia caja* (Garden Tiger)



027 *Arctia villica* (Cream-spot Tiger)



029 *Callimorpha dominula* (Scarlet Tiger)



030 *Euplagia quadripunctaria* (Jersey Tiger)



031 *Tyria jacobaea* (Cinnabar)



032 *Coscinia cribraria* (Speckled Footman)



034 *Utetheisa pulchella* (Crimson Speckled)

Tribe: Lithosiini



035 *Miltochrista miniata* (Rosy Footman)



036 *Nudaria mundana* (Muslin Footman)



037 *Thumatha senex* (Round-winged Muslin)



038 *Cybosia mesomella* (Four-dotted Footman)



039 *Pelosia muscerda* (Dotted Footman)



040 *Pelosia obtusa* (Small Dotted Footman)



041 *Lithosia quadra* (Four-spotted Footman)



042 *Atolmis rubricollis* (Red-necked Footman)



043 *Eilema depressa* (Buff Footman)



044 *Eilema griseola* (Dingy Footman)



045 *Eilema lurideola* (Common Footman)



046 *Eilema complana* (Scarce Footman)



047 *Eilema caniola* (Hoary Footman)



048 *Eilema pygmaeola* (Pigmy Footman)



049 *Eilema sororcula* (Orange Footman)



050 *Setina irrorella* (Dew Moth)

Subfamily: **Herminiinae**



052 *Macrochilo cribrumalis* (Dotted Fan-foot)



053 *Herminia tarsipennalis* (Fan-foot)



054 *Herminia tarsicrinalis* (Shaded Fan-foot)



055 *Herminia grisealis* (Small Fan-foot)



057 *Pechipogo plumigeralis* (Plumed Fan-foot)

Subfamily: **Hypenodinae**



060 *Hypenodes humidalis* (Marsh Oblique-barred)



061 *Schrankia costaestrigalis* (Pinion-streaked Snout)



062 *Schrankia taenialis* (White-lined Snout)

Subfamily: **Toxocampinae**



063 *Lygephila pastinum* (Blackneck)

Subfamily: Boletobiinae



066 Parascotia fuliginaria (Waved Black)



067 Phytometra viridaria (Small Purple-barred)



069 Laspeyria flexula (Beautiful Hook-tip)



070 Tristaeles emortualis (Olive Crescent)



072 Eulemma ostrina (Purple Marbled)



073 Eulemma parva (Small Marbled)

Subfamily: Erebininae

Tribe: Catocalini



076 Catocala fraxini (Clifden Nonpareil)



078 Catocala nupta (Red Underwing)



079 Catocala electa (Rosy Underwing)



082 Catocala promissa (Light Crimson Underwing)

Tribe: Euclidiini



083 Euclidia glyphica (Burnet Companion)



084 Callistege mi (Mother Shipton)