

Part 2a: Male genitalia of Superfamily: Noctuoidea

Family 73: Noctuidae. Male genitalia – armature

Subfamily: Plusiinae

Tribe: Abrostolini



001 *Abrostola tripartita* (Spectacle)



002 *Abrostola triplasia* (Dark Spectacle)

Tribe: Argyrogrammatini



003 *Trichoplusia ni* (Ni Moth)



004 *Thysanoplusia orichalcea* (Slender Burnished Brass)

Tribe: Plusiini



010 *Macdunnoughia confusalis* (Dewick's Plusia)



012 *Diachrysis chrysitis* (Burnished Brass)



015 *Autographa gamma* (Silver Y)



016 *Autographa pulchrina* (Beautiful Golden Y)



017 *Autographa jota* (Plain Golden Y)



018 *Autographa bractea* (Gold Spangle)



021 *Syngrapha interrogationis* (Scarce Silver Y)



022 *Plusia festucae* (Gold Spot)



023 *Plusia putnami* (Lempke's Gold Spot)

Subfamily: Eustrotiinae



024 *Protodeltote pygarga* (Marbled White-spot)



026 *Deltote uncula* (Silver Hook)



027 *Deltote bankiana* (Silver Barred)

Subfamily: Aediinae



031 *Tyta luctuosa* (Four-spotted)

Subfamily: Pantheinae



032 *Colocasia coryli* (Nut-tree Tussock)

Subfamily: Dilobinae



033 *Diloba caeruleocephala* (Figure-of-eight)

Subfamily: Acronictinae



034 *Moma alpium* (Scarce Merveille du jour)



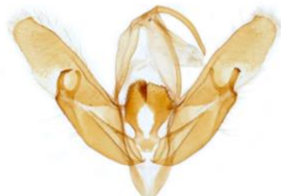
035 *Simyra albovenosa* (Reed Dagger)



036 *Acronicta alni* (Alder Moth)



037 *Acronicta tridens* (Dark Dagger)



038 *Acronicta psi* (Grey Dagger)



039 *Acronicta aceris* (Sycamore)



040 *Acronicta leporina* (Miller)



042 *Acronicta menyanthidis* (Light Knot-grass)



045 *Acronicta rumicis* (Knot Grass)



046 *Subacronicta megacephala* (Poplar Grey)



047 *Craniophora ligustri* (Coronet)

Subfamily: **Metoponiinae**



055 *Cucullia asteris* (Star-wort)

Subfamily: **Cuculliinae**



052 *Cucullia umbratica* (Shark)



053 *Cucullia chamomillae* (Chamomile Shark)



058 *Cucullia verbasci* (Mullein)

Subfamily: **Oncocnemidinae**



059 *Calophasia lunula* (Toadflax Brocade)



061 *Stilbia anomola* (Anomalous)

Subfamily: **Amphipyrinae**



062 *Amphipyra pyramidea* (Copper Underwing)



063 *Amphipyra berbera* (Svensson's Copper Underwing)



064 *Amphipyra tragopoginis* (Mouse Moth)

Subfamily: **Psaphidinae**



065 *Asteroscopus sphinx* (Sprawler)



066 *Brachionycha nubeculosa* (Rannoch Sprawler)



068 *Allophytes oxycanthae* (Green-brindled Crescent)



069 *Xylocampa areola* (Early Grey)

Subfamily: Heliiothinae



070 *Pyrrhia umbra* (Bordered Sallow)



072 *Heliiothis viriplaca* (Marbled Clover)



074 *Heliiothis peltigera* (Bordered Straw)



075 *Heliiothis nubigera* (Eastern Bordered Straw)



076 *Helicoverpa armigera* (Scarce Bordered Straw)

Subfamily: Bryophilinae



082 *Cryphia algae* (Tree-lichen Beauty)



084 *Bryophila domestica* (Marbled Beauty)



085 *Bryopsis muralis* (Marbled Green)

Subfamily: Xyleninae

Tribe: Pseudostrotiini (no material)

Tribe: Prodeniini



087 *Spodoptera exigua* (Small Mottled Willow)



088 *Spodoptera ciliata* (Dark Mottled Willow)



089 *Spodoptera littoralis* (Mediterranean Brocade)

Tribe: Elaphriini



091 *Elaphria venustula* (Rosy Marbled)

Tribe: Caradrinini



092 *Caradrina morpheus* (Mottled Rustic)



093 *Caradrina kadenii* (Clancy's Rustic)



095 *Caradrina clavipalpis* (Pale Mottled Willow)



096 *Hoplodrina octogenaria* (Uncertain)



097 *Hoplodrina blanda* (Rustic)



099 *Hoplodrina ambigua* (Vine's Rustic)



100 *Chilodes maritima* (Silky Wainscot)



101 *Carancya trigrammica* (Treble Lines)



102 *Rusina ferruginea* (Brown Rustic)



104 *Athetis hospes* (Porter's Rustic)

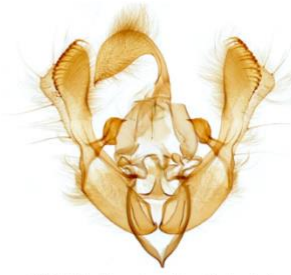
Tribe: Dyptrygini



105 *Dyptrygia scabriuscula* (Bird's Wing)

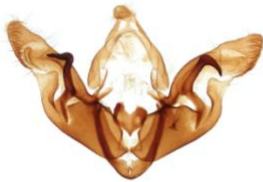


107 *Mormo maura* (Old Lady)



109 *Thalophila matura* (Straw Underwing)

Tribe: Actinotiini



110 *Hyppa rectilinea* (Saxon)

Tribe: Phlogophorini



113 *Phlogophora meticulosa* (Angle Shades)



114 *Euplexia lucipara* (Small Angle Shades)

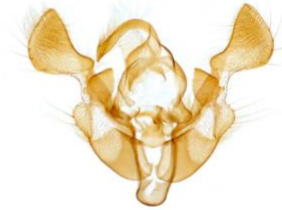
Tribe: Apameini



118 *Celaena haworthii* (Haworth's Minor)



119 *Helotropha leucostigma* (Crescent)



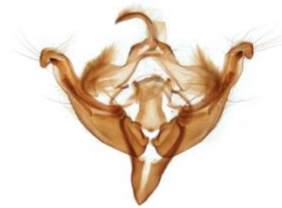
120 *Eremobia ochroleuca* (Dusky Sallow)



121 *Gortyna flavago* (Frosted Orange)



123 *Hydraecia micacea* (Rosy Rustic)



124 *Hydraecia petasitis* (Butterbur)



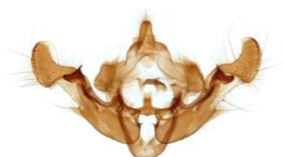
125 *Hydraecia osseola* (Marsh Mallow Moth)



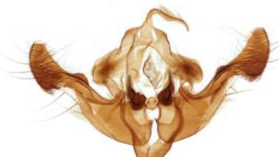
126 *Amphipoea fucosa* (Saltern Ear)



127 *Amphipoea lucens* (Large Ear)



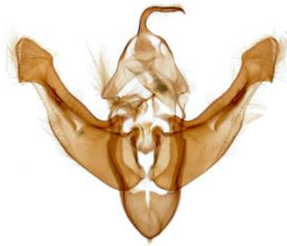
128 *Amphipoea oculea* (Ear Moth)



129 *Amphipoea crinanensis*



131 *Luperina testacea* (Flounced Rustic)



132 *Luperina nickerlii* (Sandhill Rustic)



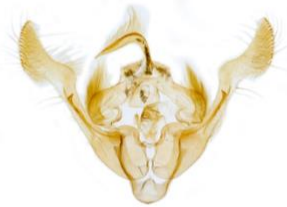
134 *Rhizedra lutosa* (Large Wainscot)



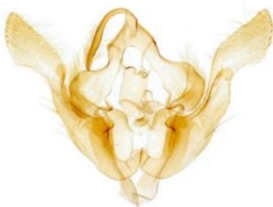
136 *Nonagria typhae* (Bulrush Wainscot)



137 *Arenostola phragmitidis* (Fen Wainscot)



140 *Archanara neurica* (White-mantled Wainscot)



141 *Archanara dissoluta* (Brown-veined Wainscot)



142 *Coenobia rufa* (Small Rufous)



144 *Denticucullus pygmina* (Small Wainscot)



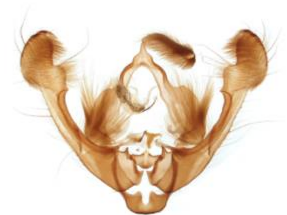
146 *Photodes captiuncula* (Least Minor)



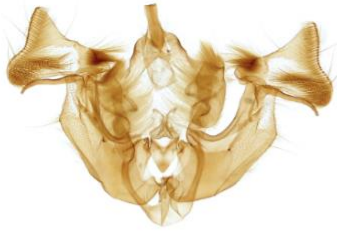
147 *Photodes minima* (Small Dotted Buff)



148 *Photodes morrisii* (Morris's Wainscot)



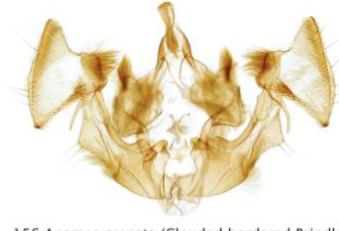
151 *Globia sparganii* (Webb's Wainscot)



154 *Apamea remissa* (Dusky Brocade)



155 *Apamea epomidion* (Clouded Brindle)



156 *Apamea crenata* (Clouded-bordered Brindle)



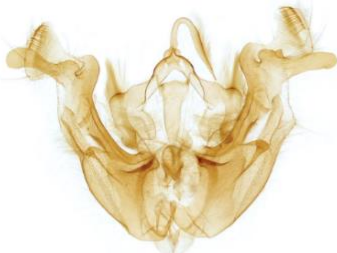
157 *Apamea anceps* (Large Nutmeg)



158 *Apamea sordens* (Rustic Shoulder-knot)



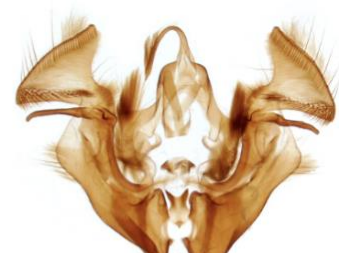
159 *Apamea unanimitis* (Small Clouded Brindle)



160 *Apamea scolapacina* (Slender Brindle)



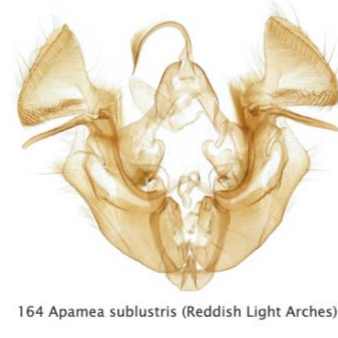
161 *Apamea oblonga* (Crescent Striped)



162 *Apamea monoglypha* (Dark Arches)



163 *Apamea lithoxylea* (Light Arches)



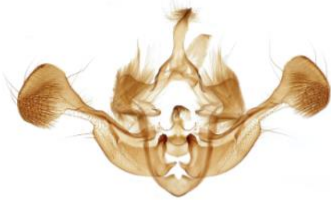
164 *Apamea sublustris* (Reddish Light Arches)



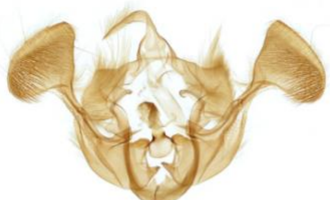
165 *Apamea furva* (Confused)



168 *Lateroligia ophiogramma* (Double Lobed)



169 *Mesapamea secalis* (Common Rustic)



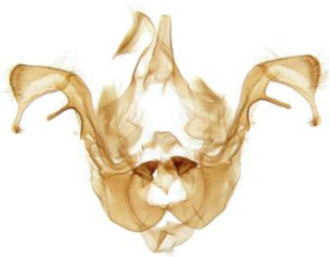
170 *Mesapamea didyma* (Lesser Common Rustic)



171 *Litoligia literosa* (Rosy Minor)



172 *Mesoligia furuncula* (Cloaked Minor)



173 *Oligia strigilis* (Marbled Minor)



174 *Oligia latrucula* (Tawny Marbled Minor)



175 *Oligia versicolor* (Rufous Minor)



176 *Oligia fasciuncula* (Middle-barred Minor)

Tribe: Episemini



178 *Leucochaena oditis* (Beautiful Gothic)

Tribe: Xylenini



180 *Tiliacea aurago* (Barred Sallow)



181 *Xanthia togata* (Pink-barred Sallow)



182 *Cirrha icteritia* (Sallow)



184 *Cirrha ocellaris* (Pale Lemon Sallow)



186 *Agrochola lychnidis* (Beaded Chestnut)



187 *Anchoscelis litura* (Brown-spot Pinion)



188 *Anchoscelis helvola* (Flounced Chestnut)



189 *Leptologia lota* (Red-lined Quaker)



190 *Leptologia macilentia* (Yellow-lined Quaker)



192 *Sunira circellaris* (Brick)



193 *Sunira lunosa* (Lunar Underwing)



1931 *Spudaea ruticilla* (Scarce Chestnut)



194 *Conistra vaccinii* (Chestnut)



197 *Conistra rubiginea* (Dotted Chestnut)



201 *Lithophane socia* (Pale Pinion)



202 *Lithophane ornitopus* (Grey Shoulder-knot)



206 *Lithophane leautieri* (Blair's Shoulder-knot)



207 *Xylena solidaginis* (Goldenrod Brindle)



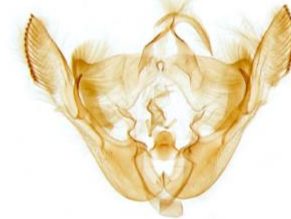
209 *Xylena vetusta* (Red Sword-grass)



210 *Eupsilia transversa* (Satellite)



211 *Enargia paleacea* (Angle-striped Sallow)



212 *Ipimorpha retusa* (Double Kidney)



213 *Ipimorpha subtusa* (Olive)



214 *Cosmia diffinis* (White-spotted Pinion)



215 *Cosmia affinis* (Lesser-spotted Pinion)



216 *Cosmia trapezina* (Dun-bar)



217 *Cosmia pyralina* (Lunar-spotted Pinion)



219 *Atethmia centrago* (Centre-barred Sallow)



220 *Brachylomia viminalis* (Minor Shoulder-knot)



221 *Parastichtis suspecta* (Suspected)



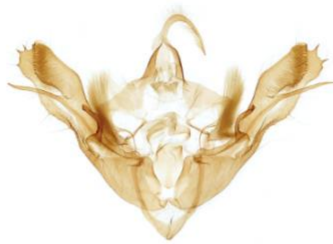
222 *Fissipunctia ypsilon* (Dingy Shears)



223 *Dryobota labecula* (Oak Rustic)



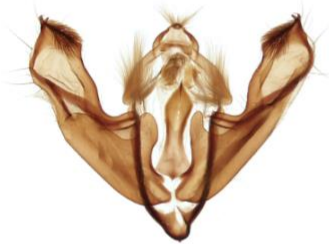
224 *Griposia aprilina* (Merveille du Jour)



225 *Dryobotodes eremita* (Brindled Green)



228 *Antitype chi* (Grey Chi)



229 *Trigonophora flammea* (Flame Brocade)



230 *Aporophyla australis* (Feathered Brindle)



232 *Aporophyla lueneburgensis* (Deep-brown Dart)



233 *Aporophyla nigra* (Black Rustic)



235 *Polmixis lichenea* (Feathered Ranunculus)



236 *Polmixis xanthomista* (Black-banded)



237 *Polmixis flavocincta* (Large Ranunculus)



238 *Mniotype adusta* (Dark Brocade)

Subfamily: Hadeninae

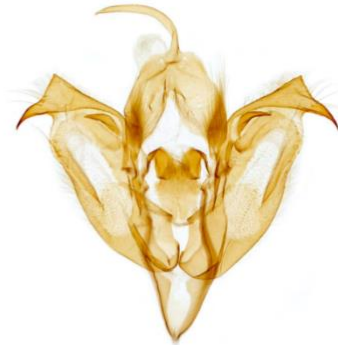
Tribe: Orthosiini



241 *Panolis flammea* (Pine Beauty)



242 *Orthosia incerta* (Clouded Drab)



243 *Orthosia miniosia* (Blossom Underwing)



244 *Orthosia cerasi* (Common Quaker)



245 *Orthosia cruda* (Small Quaker)



247 *Orthosia gracilis* (Powdered Quaker)



248 *Orthosia opima* (Northern Drab)



249 *Orthosia gothica* (Hebrew Character)

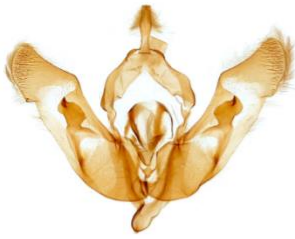


250 *Anorthoa munda* (Twin-spotted Quaker)



251 *Egira conspicillaris* (Silver Cloud)

Tribe: Tholerini



252 *Tholera cespitis* (Hedge Rustic)

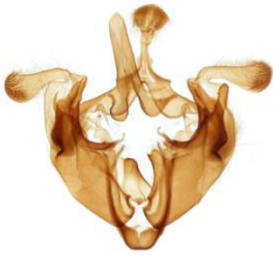


253 *Tholera decimalis* (Feathered Gothic)



254 *Cerapteryx graminis* (Antler Moth)

Tribe: Hadenini



255 *Anarta trifolii* (Nutmeg)



261 *Polia nebulosa* (Grey Arches)



263 *Lacanobia w-latinum* (Light Brocade)



264 *Lacanobia thalassina* (Pale-shouldered Brocade)



265 *Lacanobia contigua* (Beautiful Brocade)



266 *Lacanobia suasa* (Dog's Tooth)



267 *Lacanobia oleracea* (Bright-line Brown-eye)



270 *Melanchra persicaria* (Dot Moth)



271 *Ceramica pisi* (Broom Moth)



272 *Papestra biren* (Glaucous Shears)



273 *Hada plebeja* (Shears)



274 *Mamestra brassicae* (Cabbage Moth)



276 *Sideridis rivularis* (Campion)



279 *Hecatera bicolorata* (Broad-barred White)



280 *Hecatera disodea* (Small Ranunculus)



281 *Hadena bicurris* (Lychnis)



282 *Hadena compta* (Varied Coronet)



283 *Hadena confusa* (Marbled Coronet)

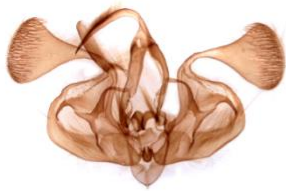


284 *Hadena albimacula* (White Spot)



286 *Hadena perplexa* (Tawny Shears)

Tribe: Leucaniini



288 *Mythemna turca* (Double Line)



289 *Mythemna pudorina* (Striped Wainscot)



290 *Mythemna conigera* (Brown-line Bright-eye)



291 *Mythemna pallens* (Common Wainscot)



293 *Mythemna impura* (Smoky Wainscot)



294 *Mythemna straminea* (Southern Wainscot)



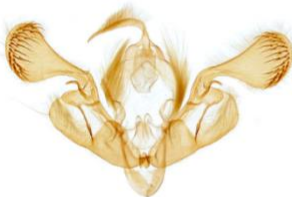
295 *Mythemna vitellina* (Delicate)



296 *Mythemna unipuncta* (White-speck)



297 *Mythemna albipuncta* (White Point)



298 *Mythemna ferrago* (Clay)



299 *Mythemna litoralis* (Shore Wainscot)



300 *Mythemna l-album* (L-album Wainscot)



301 *Leucania comma* (Shoulder-striped Wainscot)



302 *Leucania obsoleta* (Obscure Wainscot)



303 *Leucania putrescens* (Devonshire Wainscot)



304 *Leucania loreyi* (Cosmopolitan)

Subfamily: Noctuinae



307 *Peridroma saucia* (Pearly Underwing)



313 *Euxoa tritici* (White-line Dart)



316 *Agrotis cinerea* (Light Feathered Rustic)



317 *Agrotis exclamatoris* (Heart and Dart)



319 *Agrotis segetum* (Turnip Moth)



320 *Agrotis clavis* (Heart and Club)



322 *Agrotis vestigialis* (Archer's Dart)



324 *Agrotis trux* (Crescent Dart)



325 *Agrotis puta* (Shuttle-shaped Dart)



327 *Agrotis ipsilon* (Dark Sword-grass)



328 *Axylia putris* (Flame)



329 *Ochropleura plecta* (Flame Shoulder)



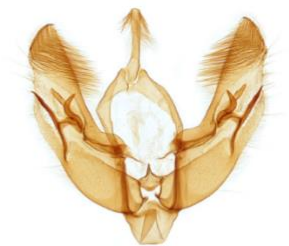
330 *Ochropleura leucogaster* (Radford's Flame Shoulder)



331 *Diarsia dahlia* (Barred Chestnut)



332 *Diarsia brunnea* (Purple Clay)



333 *Diarsia mendica* (Ingrailed Clay)



334 *Diarsia rubi* (Small Square-spot)



335 *Diarsia florida* (Fen Square-spot)



336 *Cerastis rubricosa* (Red Chestnut)



337 *Cerastis leucographa* (White-marked)



338 *Lycophotia porphyrea* (True Lover's Knot)



341 *Standfussiana lucernea* (Northern Rustic)



342 *Noctua pronubana* (Large Yellow Underwing)



343 *Noctua fimbriata* (Broad-bordered Yellow Underwing)



344 *Noctua orbona* (Lunar Yellow Underwing)



345 *Noctua comes* (Lesser Yellow Underwing)



346 *Noctua interjecta* (Least Yellow Underwing)



347 *Noctua janthina* (Langmaid's Yellow Underwing)



348 *Noctua janthe* (Lesser Broad-bordered Yellow Underwing)



352 *Anaplectoides prasina* (Green Arches)



353 *Xestia baja* (Dotted Clay)



354 *Xestia stigmatica* (Square-spotted Clay)



356 *Xestia agathina* (Heath Rustic)



357 *Xestia xanthographa* (Square-spot Rustic)



358 *Xestia sexstrigata* (Six-striped Rustic)



359 *Xestia c-nigrum* (Setaceous Hebrew Character)



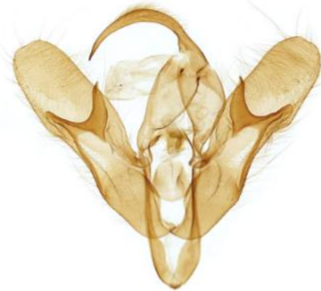
360 *Xestia ditrapezium* (Triple-spotted Clay)



361 *Xestia triangulum* (Double Square-spot)



365 *Eugnorisma glareosa* (Autumnal Rustic)



366 *Eugnorisma depuncta* (Plain Clay)



367 *Protolampra sobrina* (Cousin German)



368 *Naenia typica* (Gothic)